

1976



ST. ELIZABETH ANN SETON

Parish  
Development Fund





MOST REVEREND  
EDWARD D. HEAD, D.D.  
Bishop of Buffalo

The Chancery  
Diocese of Buffalo  
35 Lincoln Parkway  
Buffalo, New York 14222

(716) 883-1372

September 1, 1976

The Reverend Kenneth M. Menge  
St. Elizabeth Ann Seton Rectory  
328 Washington Avenue  
Dunkirk, New York 14048

Dear Father Menge:

With great pleasure I have learned of your plans for the renovation of the Parish Church of St. Elizabeth Ann Seton and the construction of a rectory-administration building for your parish community.

I am confident that the renovation of your parish church and the construction of the rectory-administration building will be of great aid in your pastoral work and will be an added inspiration to all of your parishioners who have waited so faithfully for this important event.

I am well acquainted with your building and financing plans, and have seen that they are well laid. The success of this campaign you are undertaking to raise funds will be essential for the carrying out of your project. I pray that your parish community responds generously to this appeal and that, through this appeal, your parish community is deepened and strengthened.

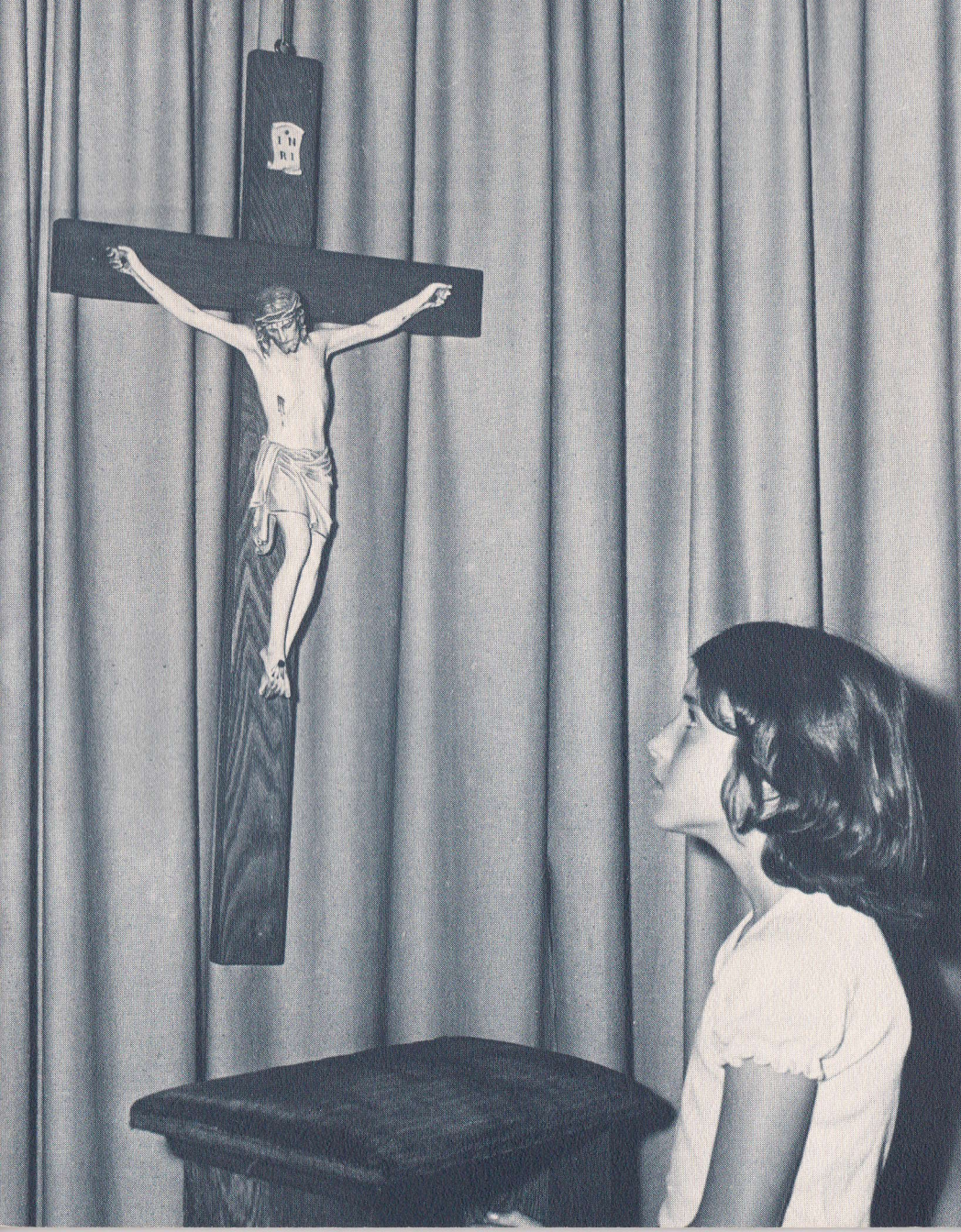
May I take this occasion to assure you and your parish family of a remembrance in my Masses and prayers, and I ask you to pray for me and for the Church at Buffalo.

Sincerely,

Most Rev. Edward D. Head, D.D.  
Bishop of Buffalo

EDH/w





“ . . . suffer the little children  
to come unto me . . . ”

Luke 18:16





REV. KENNETH M. MENGE  
Pastor



## *Saint Elizabeth Ann Seton Church*

REV. KENNETH M. MENGE  
Pastor

REV. JAMES A. WALTER  
Associate Pastor

September 14, 1976

Dear Parishioners,

In the summer of 1975, I accepted the appointment to become the first pastor of St. Elizabeth Ann Seton Parish because I believe in the future - the future of this new parish faith community, the future of the City of Dunkirk and the future of the Catholic Church. One year of living and working among you has convinced me that a wonderful future lies before us and that our dreams and hopes for St. Elizabeth Ann Seton Parish can be accomplished.

Now we stand on the edge of that future as we begin the first phase of developing and improving our parish physical plant. The major renovation of St. Elizabeth Ann Seton Church will enhance the architectural beauty of this magnificent building and make it a more comfortable and inspiring place of worship for many years to come. The construction of the new administration building-rectory will enable your parish priests and staff to serve you more efficiently and economically.

I invite you now to join us in making these plans a reality by your support of St. Elizabeth Ann Seton Building Fund. I ask you to make an investment in the future of our parish, a commitment that will benefit not only our present parishioners but also our children and the generations that will follow as we move into the 21st Century.

The future is in our hands; the time to begin is now. With the help of God our Father and the prayers of St. Elizabeth Ann Seton, we can make our dreams come true.

Sincerely yours in Christ,

Rev. Kenneth M. Menge  
Pastor

KMM/akc

328 WASHINGTON AVENUE

• DUNKIRK, NEW YORK 14048

• AREA CODE 716 366-1750



## The Project . . .

### The Church

The Catholic Church— that glorious highway to Salvation — was founded by Our Lord and Savior two thousand years ago. In all of those days and years the Church has continued to grow, to enlist more and more people in its ranks, to bring closer all men through the Sacraments.

In recent years there have been some changes in the externals of the Church. But in no way has the essence of our Faith been altered. The Words of Consecration are still the same as when they were first spoken by Jesus at the Last Supper. They have not changed. They can not change.

Throughout the centuries of its history the Church has grown and served. Churches and schools have been built. Hospitals, orphanages, homes for the aged, all staffed by pious men and women enlisted in the service of God, have cared for literally millions of people.

### Growth

But as the Church has grown so also has it become more complex. We call our Church universal and so it is. It flourishes throughout the world, and missionary Priests, Brothers, Sisters and lay volunteers, strive daily to enlist more people into the Church.

### The Parish

In order to serve its people better, a way had to be devised to bring people together in groups not only for liturgical functions, but also for social gatherings and community events. And so, with the inspiration of Our Divine Lord, the idea of parishes was conceived.

A parish is so much a part of every Catholic life that we sometimes forget it too has its complexities, its problems. Consider for a moment what it would be like to be the Pastor of St. Elizabeth Ann Seton Parish. To begin, the spiritual well-being of approximately 1900 families would be in your care. Sunday Mass, daily Mass, administering the Sacraments, sick calls — that would just be the tip of the iceberg. Then there are the numerous Parish societies. There are two hundred fifty-five youngsters in the Parish school. There is a Church badly in need of renovation, a former monastery being used as a Parish administration building and rectory. The monastery, built in the late 1800's, is much too large. Heating alone is a costly item because of high ceilings and the inability to close off parts not being used.



## What Happens?

The first step must be to establish priorities. Spiritual well-being is paramount and therefore God's House must be cared for. The Church must be renovated. It must be made liturgically correct in line with the recommendations set out by Vatican II. It must be a more comfortable place for worship and a more structurally sound building.

The second consideration must be the administration areas and priests' rooms. The monastery is totally unsuited for the tasks needed to be done. The cost of renovation would be prohibitive and would not provide the kinds of areas necessary. Therefore we must build a new Parish Administration Building-Rectory as quickly as possible in order to save money and do a more effective job.

## How?

This is a large undertaking — \$791,900 — and the natural question is "Where is the money coming from?"

Part of the funds are on hand. Some will have to be borrowed. But we are now in the midst of a fund-raising campaign — The St. Elizabeth Ann Seton Development Fund — which will provide the necessary money to go ahead. Volunteers are now visiting parishioners seeking their participation in the form of pledges payable over 36 months/4 tax years. Our goal is a minimum of \$300,000. How ever much we exceed that will allow us to borrow less.

## This is the Picture —

Available Parish Funds . . . . .	\$ 300,000*
Minimum amount to be raised in our campaign . . . . .	300,000
Balance to be financed by long term loan	<u>\$ 191,900</u>
	\$ 791,900

\*This does not include \$115,000 in Bingo Savings Funds to be used for educational purposes only.

## Expenses

### Construction:

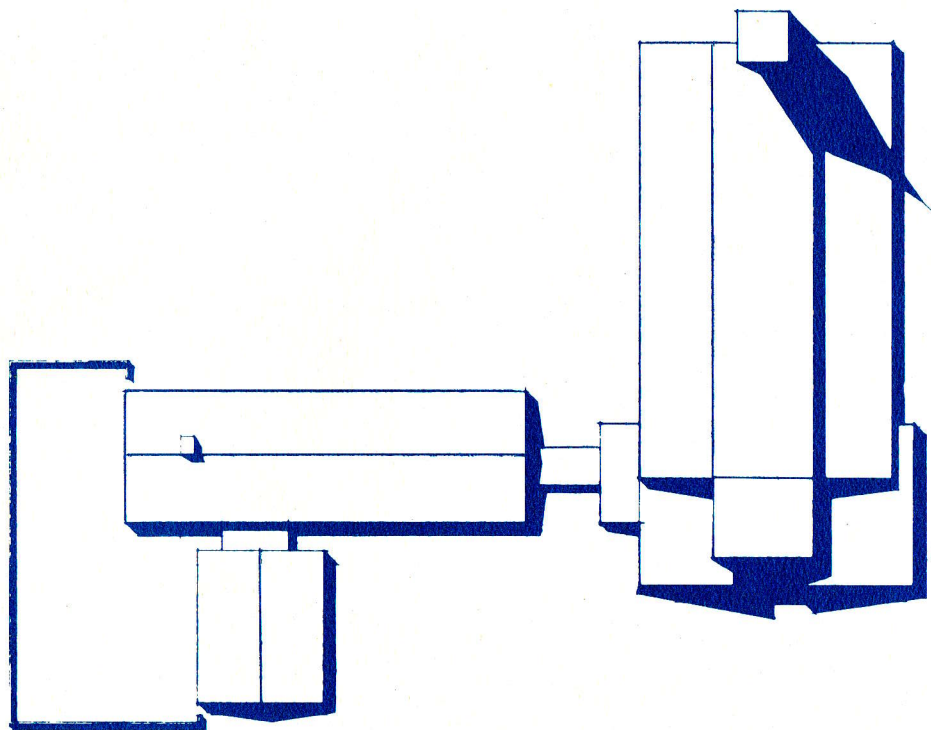
Church . . . . .	\$ 317,000
Parish Administration-Rectory	<u>182,000</u>
<b>Total Construction</b> . . . . .	\$ 499,000
Site Purchase for Additional Parking . . .	18,000
Site Work (demolition, landscaping, etc.)	94,000
Architects and Engineers Fees . . . . .	50,000
Construction Insurance . . . . .	1,000
Furniture and Equipment . . . . .	10,000
Art Work . . . . .	25,000
Contingent Fund (10% of construction)	49,900
Inflation Cost (9%) . . . . .	<u>45,000</u>
<b>Total Project Cost</b> . . . . .	\$ 791,900

## Your Part!

When you are called upon by one of your fellow parishioners, please consider a thoughtful proportionate pledge. This is a campaign of sacrifice, not convenience. Please, don't give until it hurts; **give until it feels good.**



## The Commemorative Opportunity Program



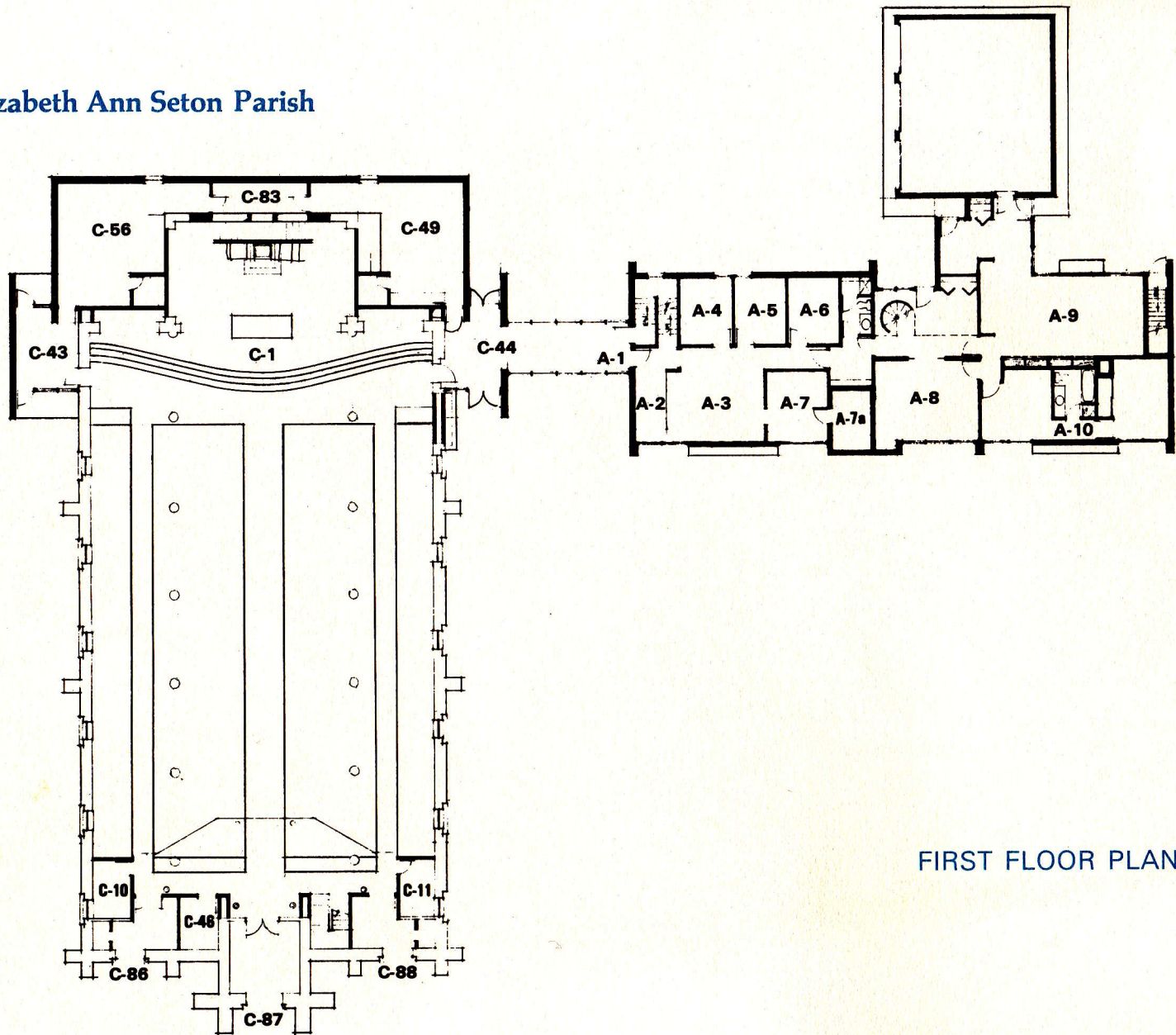
A Commemorative Unit in the St. Elizabeth Ann Seton renovated Church or in the new Parish Administration-Priest's Rectory Building, is the best way to let future generations know of the deep concern felt by this generation. Gifts made in memory of a loved one, or in honor of a friend or relative, will remain as symbols of dedication and inspiration.

Appropriate recognition will be given signifying commemorative donations made by individuals or organizations. All Commemorative Opportunities are determined by the desirability of location and may have no relationship to the actual cost of construction. Requests for the reservation of Commemorative Opportunities should be made at the Campaign Office in order to avoid duplication.

Should changes in construction plans alter a specific dedication unit, suitable alternative arrangements will be made with the donor. An appropriate plaque in our Church and the new Parish Administration Building will honor all Commemorative Opportunities.

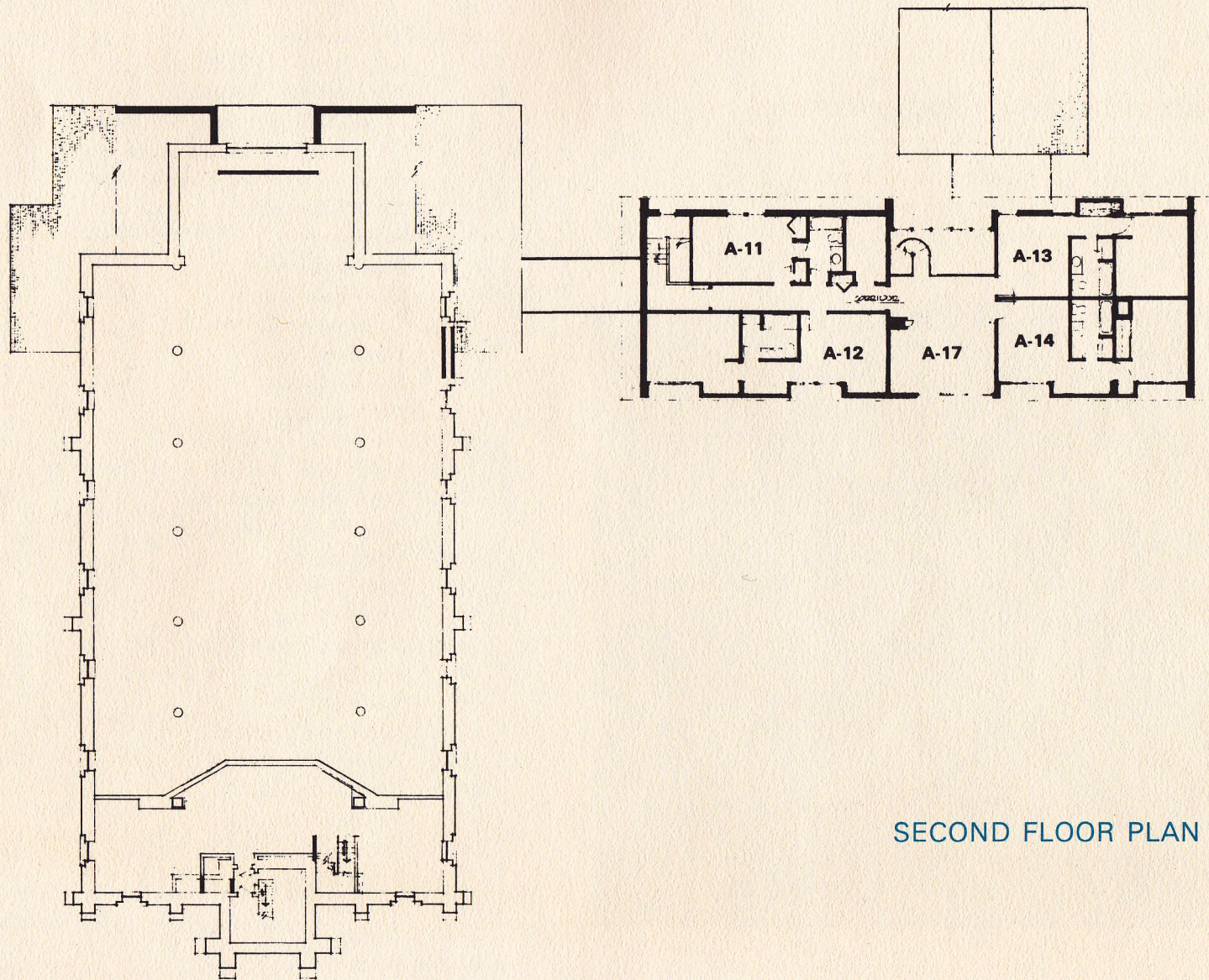


# St. Elizabeth Ann Seton Parish



FIRST FLOOR PLAN

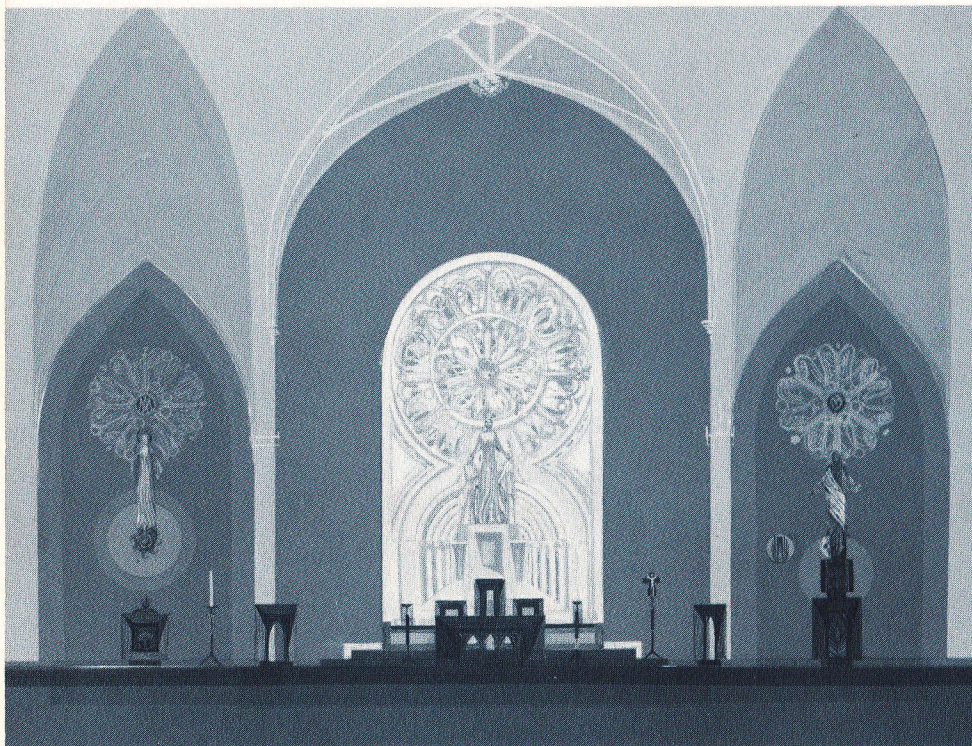




SECOND FLOOR PLAN



## Commemorative Opportunities



MEMORIAL  
NUMBER

NAME

SUBSCRIPTION

### Interior of the Church

C-1	Sanctuary — to dedicate	\$50,000
C-2	Main Altar of Sacrifice	30,000*
C-3	Shrine of St. Elizabeth Ann Seton	25,000*
C-4	Shrine of the Sacred Heart of Jesus	20,000*
C-5	Shrine of the Blessed Virgin Mary	20,000*
C-6	Main Tabernacle	20,000*
C-7	Pulpit	10,000*
C-8	Baptismal Font	15,000*
C-9	Celebrant's Bench	5,000*
C-10-11	Confessional Rooms (2)	(ea.) 15,000
C-12	Standing Crucifix	10,000*
C-13	Paschal Candle	10,000*
C-14	Sanctuary Lamp	5,000*
C-15-16	Main Altar Candles (2)	(ea.) 7,500*
C-17-30	Refurbished Stations of the Cross (14)	(ea.) 1,000*
C-31-32	Sanctuary Kneelers (2)	(ea.) 2,500*
C-33-42	Holy Water Fonts (10)	(ea.) 1,000*
C-43-44	Vestibules (2)	(ea.) 1,500
C-45	Choir Stairs	5,000*
C-46	Usher's Room	1,000
C-47-48	Standing 7-branch Candelabra (2)	(ea.) 2,500*
C-49	Priest's Sacristy — to dedicate	7,500
C-50	Vestment Case	1,500*
C-51	Vestment Wardrobe	1,500*
C-52-55	Sets of Vestments (4)	(ea.) 1,000*
C-56	Altar Boys' Sacristy	5,000
C-57	Vestment Wardrobe	1,000*
C-58-82	Cassock and Surplice Sets (25)	(ea.) 500*
C-83	Ambulatory	1,000
C-84	Carpeting	7,500*
C-85	Lighting	7,500*
C-86-88	Double Doors (3 sets)	(ea.) 5,000



## NAME

## SUBSCRIPTION

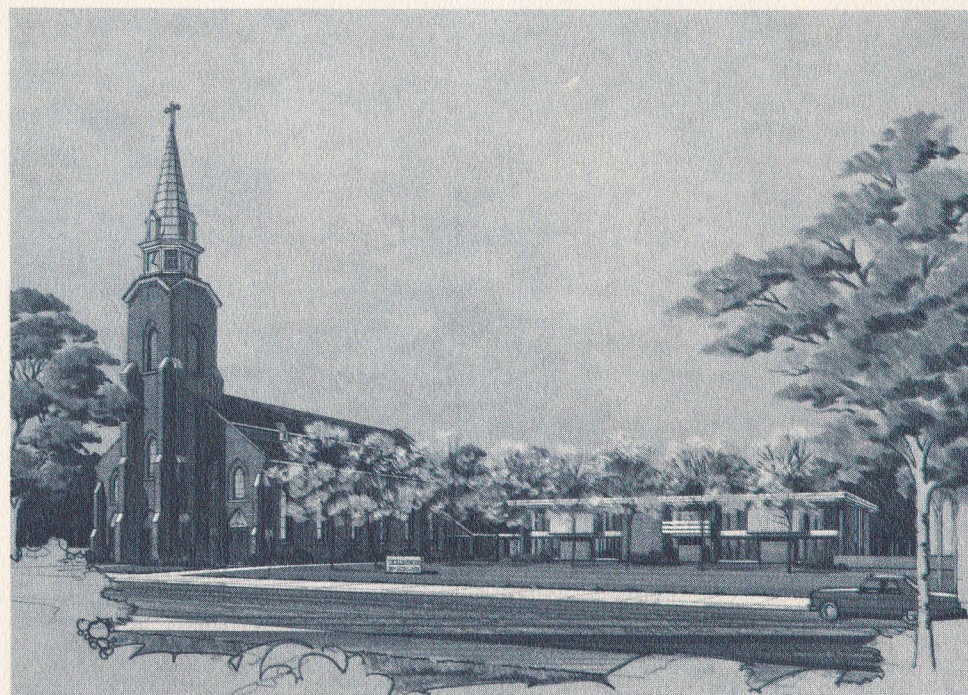
**Exterior of the Church**

C-89	Steeple	\$10,000*
C-90-93	Illumination of Clock (4 faces)	(ea.) 1,000*
C-94	Parish Sign	1,000*
C-95	Landscaping	7,500*

**Parish Administration Building — to dedicate** 15,000

A-1	Main Entrance	5,000
A-2	Waiting Room	2,500
A-3	Secretarial Office	2,500
A-4-5	Priests' Offices (2)	(ea.) 5,000
A-6	Conference Room	5,000
A-7	Work Room	1,000
A-7a	Vault	2,500
A-8	Dining Room	1,500
A-9	Kitchen	1,500
A-10-11	Guest Quarters (2)	(ea.) 2,500
A-12-14	Priests' Quarters (3)	(ea.) 2,500
A-15	Carpeting	1,000*
A-16	Lighting	1,000*
A-17	Commons Room	2,500

\* Items with asterisks are not shown on drawings because of space limitations.





## St. Elizabeth Ann Seton Parish Council

REV. KENNETH M. MENGE    Pastor, Chairman

REV. JAMES A. WALTER    Associate Pastor, Vice-Chairman

RICHARD ANSON

CARL A. CARLSON

MRS. PATRICIA EBERT

J. WM. FARRELL

LEONARD FRAZITA

MRS. MARY D. HARRINGTON    Trustee

MRS. ADELE LUDEMAN

EDWARD ORCUTT    Chairman, Finance Committee

GEORGE PARISI    Chairman, Building Committee

JOSEPH SADEN

JEROME TARNOWSKI

MISS EVELYN WAGNER

DR. ARTHUR L. KAISER    Trustee  
Campaign General Chairman



ARTHUR L. KAISER  
10 East Green Street  
Dunkirk, N. Y. 14048

September 13, 1976

Dear Fr. Menge:

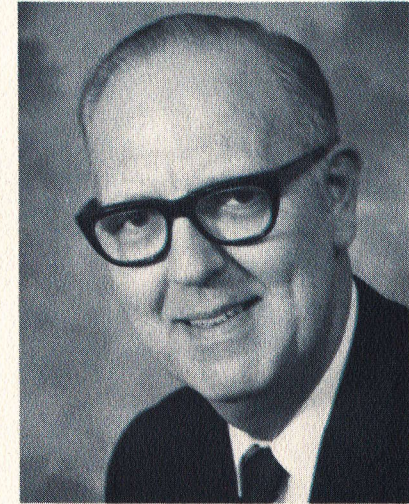
Thank you for asking me to serve as General Chairman for our Parish Development Fund Campaign. I am most pleased to accept the position and do so with a firm conviction that there is an important job to be done; a job that we, as a new parish community, must do; and a job that we will do.

I share your belief in the bright future of St. Elizabeth Ann Seton Parish and know that all the volunteers we shall enlist, and indeed, all our parishioners share this belief too. It is this belief in ourselves and in our future that assures victory. We shall have our remodeled Church and our new Parish Administration Building and Priests' Residence. I approach the difficult task ahead of us with a sense of humility but also with a sense of confidence and conviction based on the certainty that we begin here a most important work, a work that is essential to this new parish as we attempt to serve in the most effective way this community of the People of God.

Again, thank you for asking me. Please remember me and all our volunteer workers in your prayers.

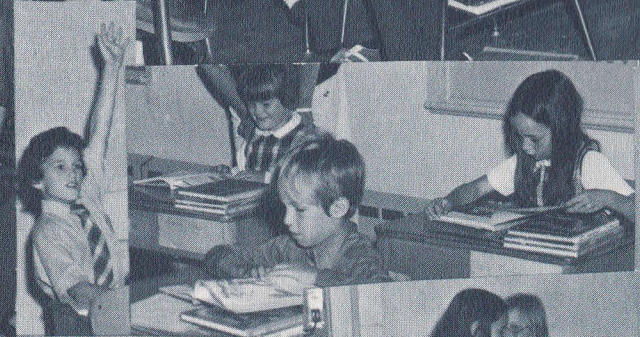
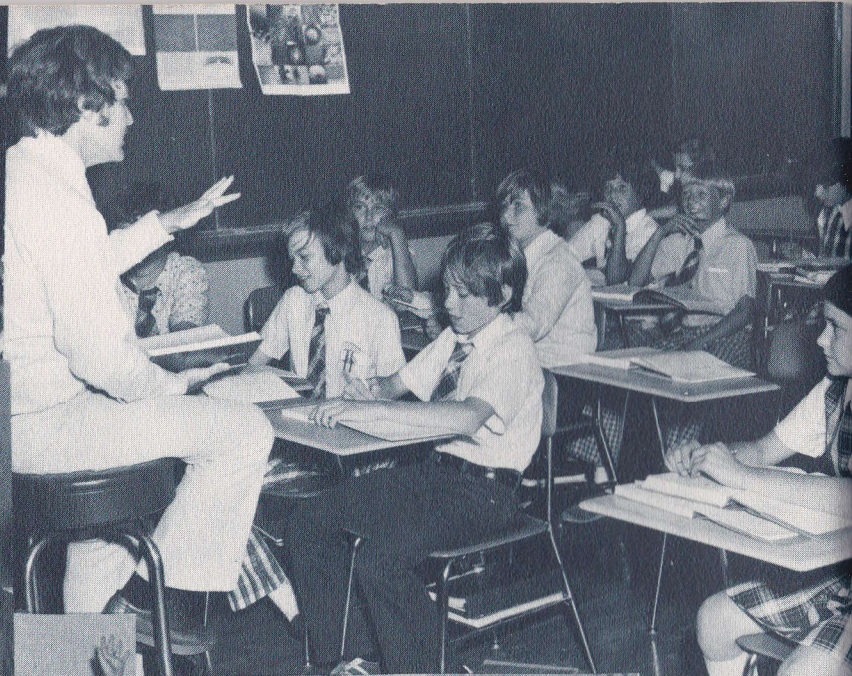
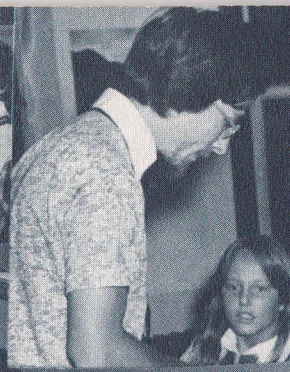
Sincerely yours.

*A. L. Kaiser*  
A. L. Kaiser



ARTHUR L. KAISER, Ed. D.  
General Chairman







"Blessed Guardians . . . be watchful. Help us to use well  
the grace of the moment in the care and instruction  
of the little ones under our charge. Watch over them  
with us."

St. Elizabeth Ann Seton



**St. Elizabeth Ann Seton  
Parish  
Development Fund**

328 Washington Avenue, Dunkirk, New York 14048

Parish Phone — 366-1750

Campaign Phone — 366-2030